



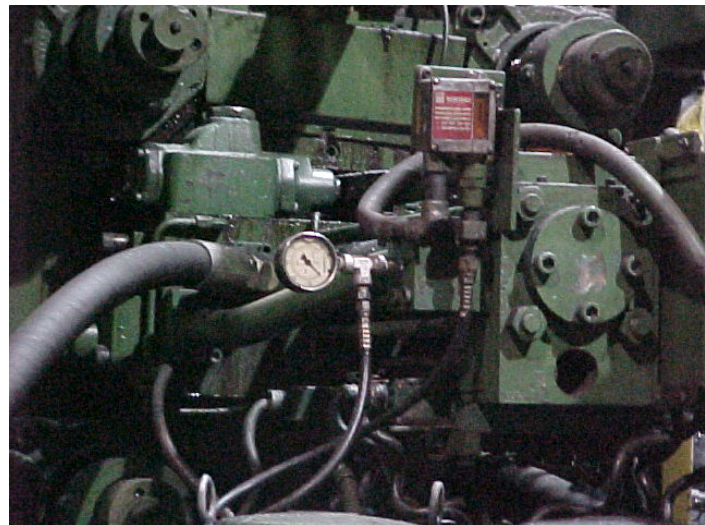
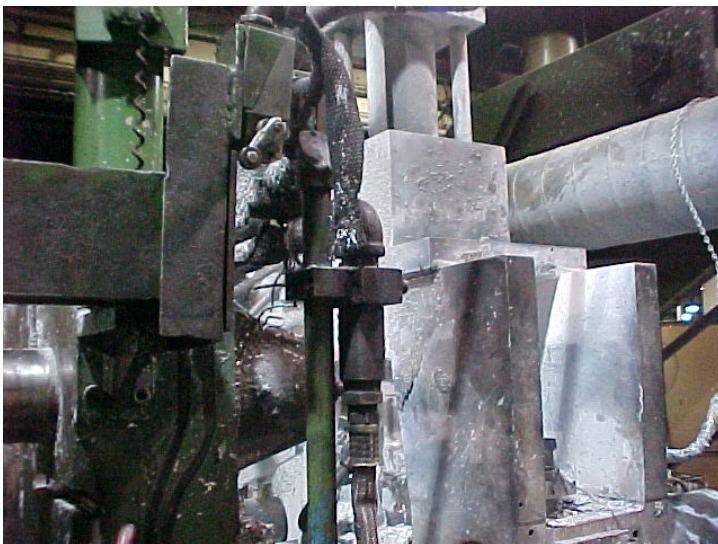
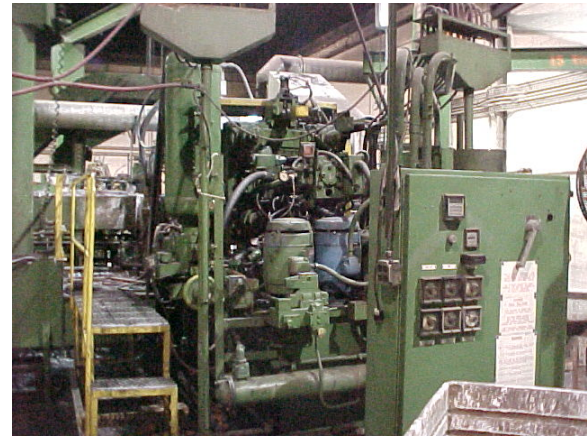
Die Cast Press Mfg. Co., Inc.

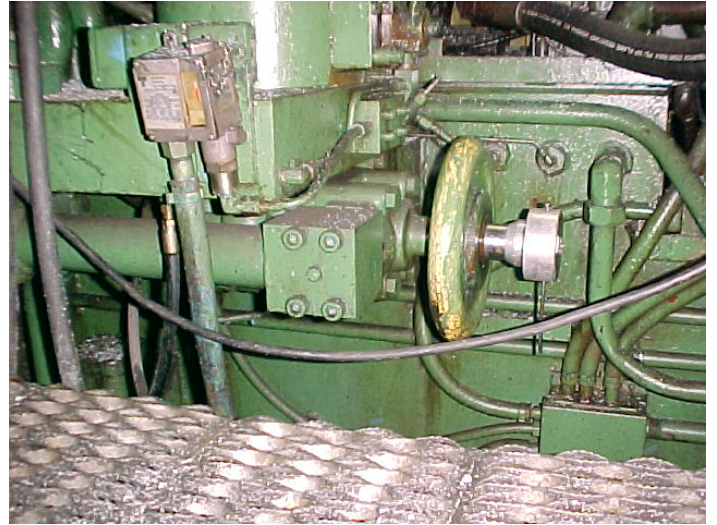
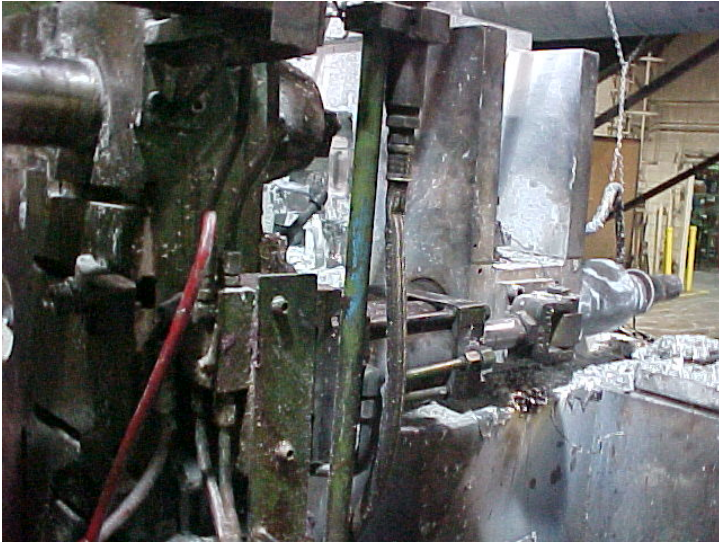
56480 Kasper Drive PO Box 268 Paw Paw, Michigan 49079
Telephone (269) 657-6060 Fax (269) 657-9302

One used 250 ton Prince zinc die cast machine As Is Where Is

Specifications

Ref	944
Tonnage	250
Make	Prince
Distance between tie bars	20" x 20"
Tie bar dia.	4"
Front platen	6.75" x 34" x 39"
Moving platen	5.75" x 34" x 35"
Rear Platen	6.75" x 34" x 37.75"
Die stroke	10"
Die thickness	10"-21"
Weight approx	31,000 #
Machine size	6'8" x 17'6" x 8'9"





Contact Ken Smith at (269) 657-6060 for an inspection visit or more information

Specifications subject to revisions – Subject to prior sale

Die Cast Press Mfg. Co., Inc.
P.O. Box 268 -Paw Paw MI 49079